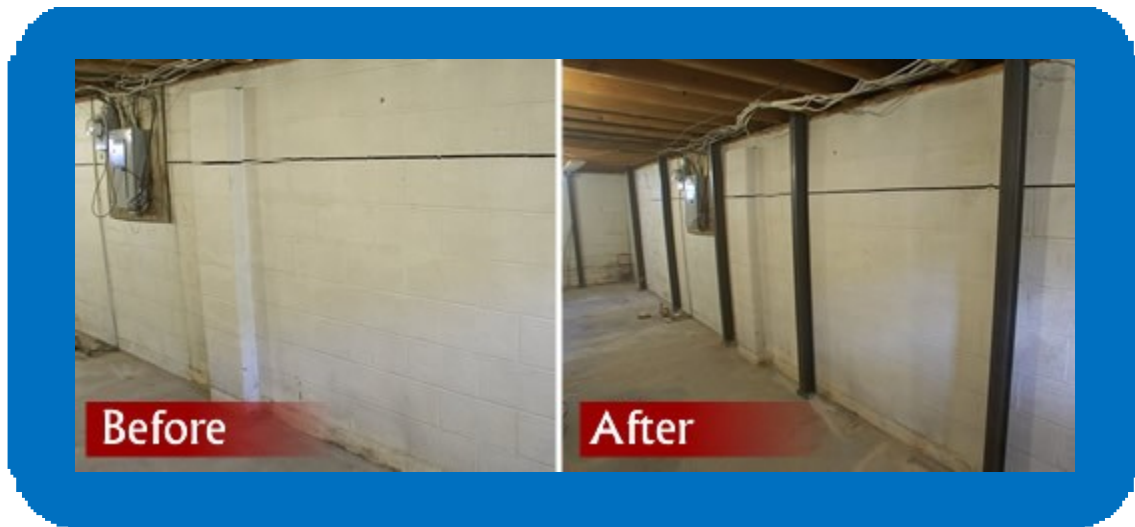


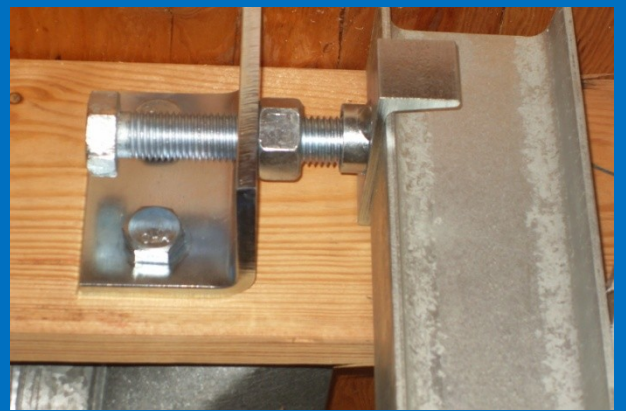
# POWER BRACE Wall Stabilizing/Support System



The constant movement of soil due to frost and hydrostatic pressure can have quite an effect on basement walls causing the walls to bow, bulge and even can create wall shear.



The Power Brace will stop the forces of nature from such having an effect on your basement



walls and over time can move walls back to their original position

877-DRY-DOGS

[www.MyBetterBasement.com](http://www.MyBetterBasement.com)

